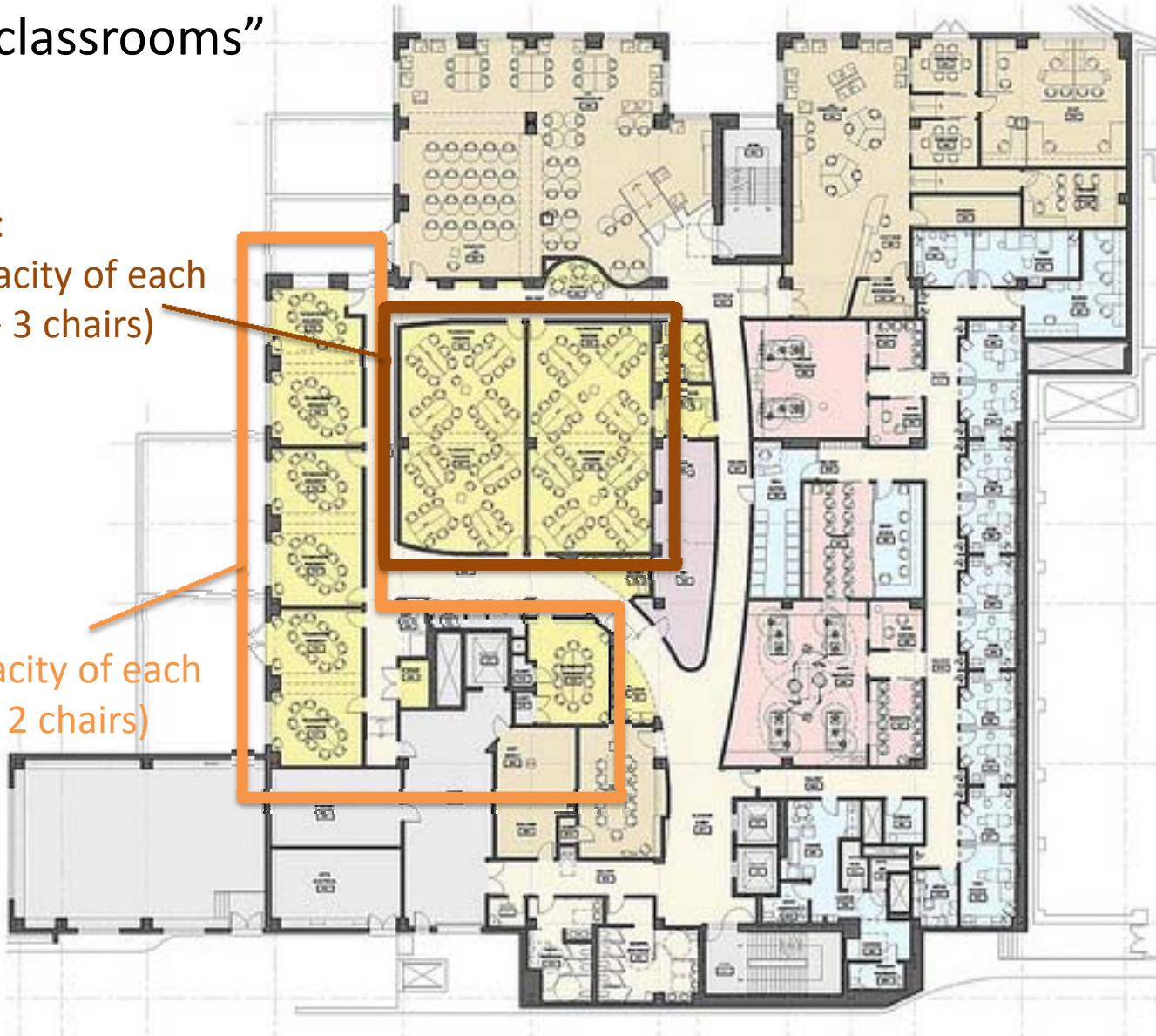


Teaching and Learning Center

Yellow “classrooms”

CL 220-223:
Official capacity of each
room: 24 (+ 3 chairs)

CL 210-216:
Official capacity of each
room: 10 (+ 2 chairs)



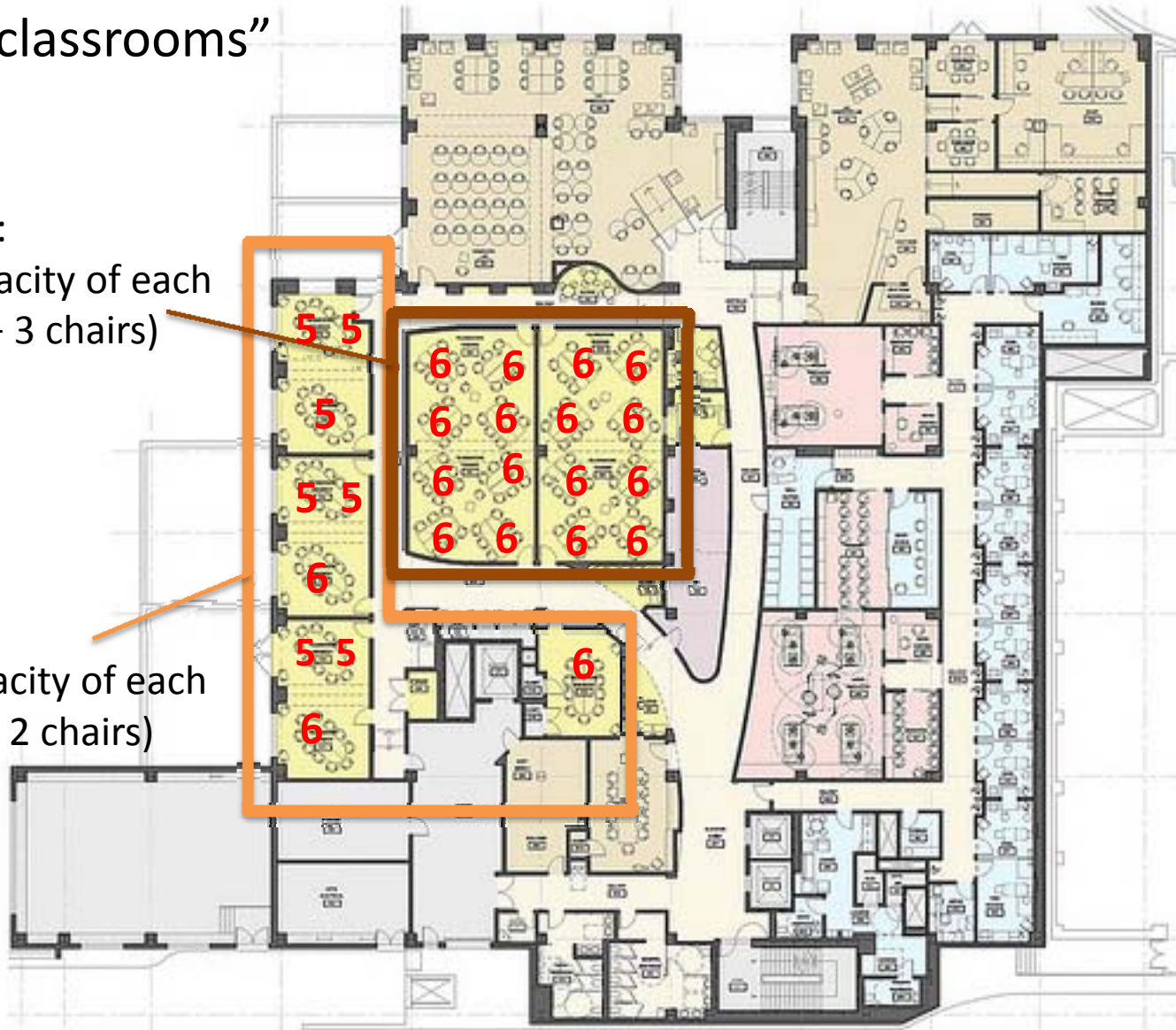
SO: these rooms can officially accommodate:
 $4 \times 24 + 7 \times 10 = 166$ students

Teaching and Learning Center

Yellow “classrooms”

CL 220-223:
Official capacity of each
room: 24 (+ 3 chairs)

CL 210-216:
Official capacity of each
room: 10 (+ 2 chairs)



Can officially accommodate:
 $4 \times 24 + 7 \times 10 = 166$

2010-2011 MS1 class size: 149

This shows a possibility for assigning teams to rooms using TBL/anatomy groups

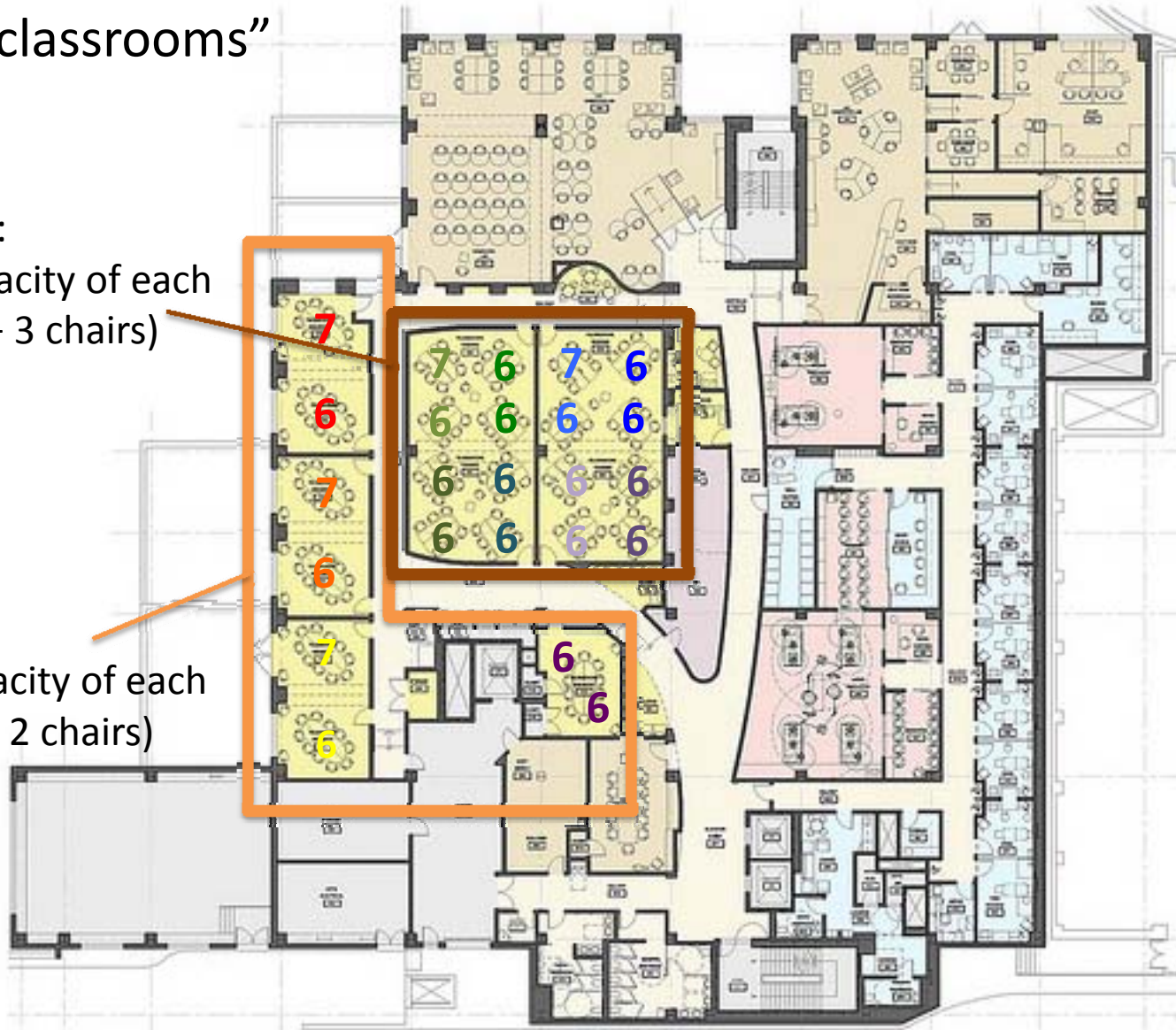
(19 teams of 6, 7 teams of 5) **(NOTE: these groups not retained for MS1s past Prologue 2010)**

Teaching and Learning Center

Yellow “classrooms”

CL 220-223:
 Official capacity of each
 room: 24 (+ 3 chairs)

CL 210-216:
 Official capacity of each
 room: 10 (+ 2 chairs)



Can officially accommodate:
 $4 \times 24 + 7 \times 10 = 166$

2010-2011 MS1 class size: 149

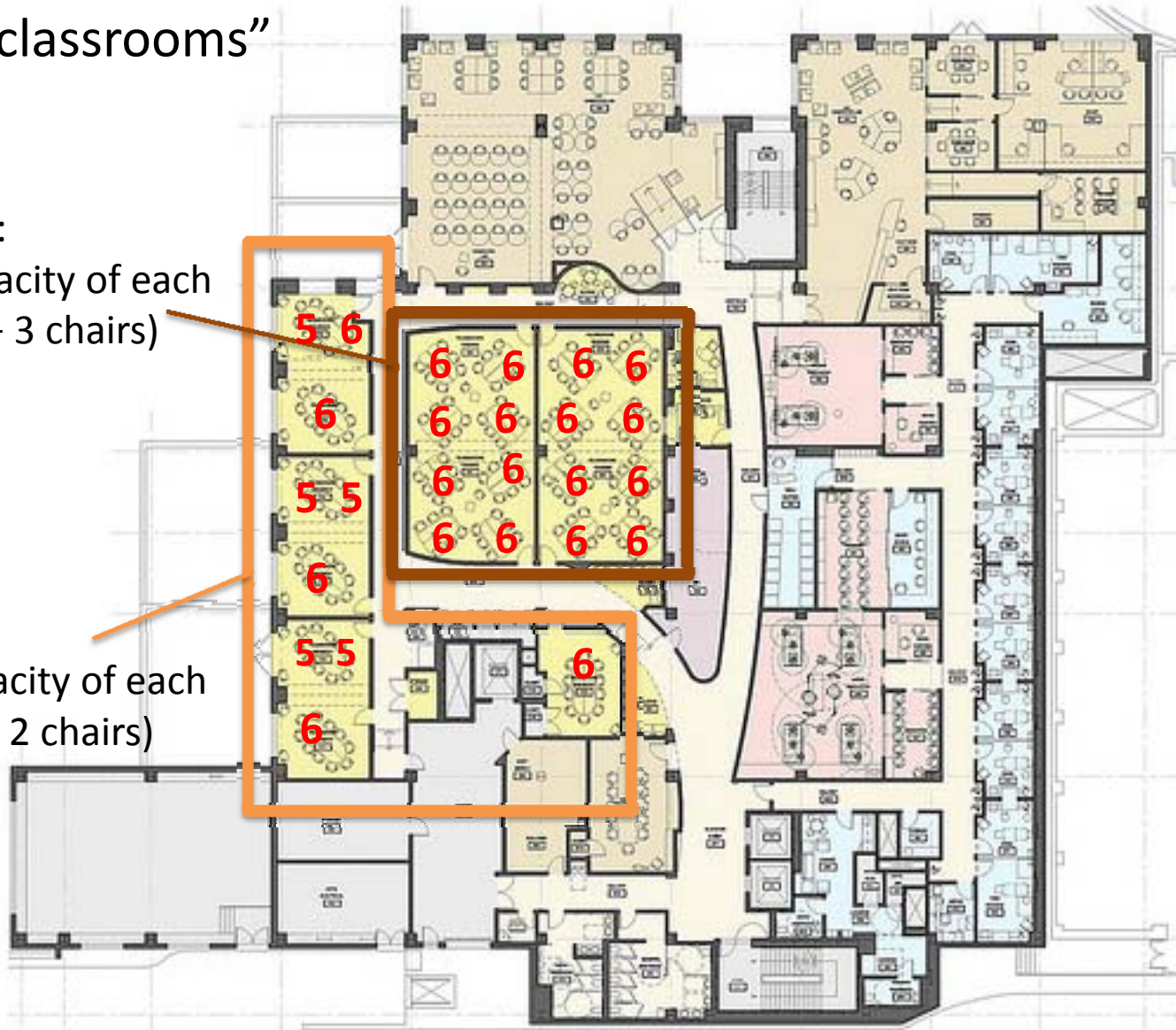
This shows a possibility for assigning teams to rooms using **EC SGs** (divided in half)
 (5 SGs of 13 (divide into 7/6), 7 SGs of 12 (divide into 6/6))

Teaching and Learning Center

Yellow “classrooms”

CL 220-223:
Official capacity of each
room: 24 (+ 3 chairs)

CL 210-216:
Official capacity of each
room: 10 (+ 2 chairs)



Can officially accommodate:
 $4 \times 24 + 7 \times 10 = 166$

2010-2011 MS2 class size: 151

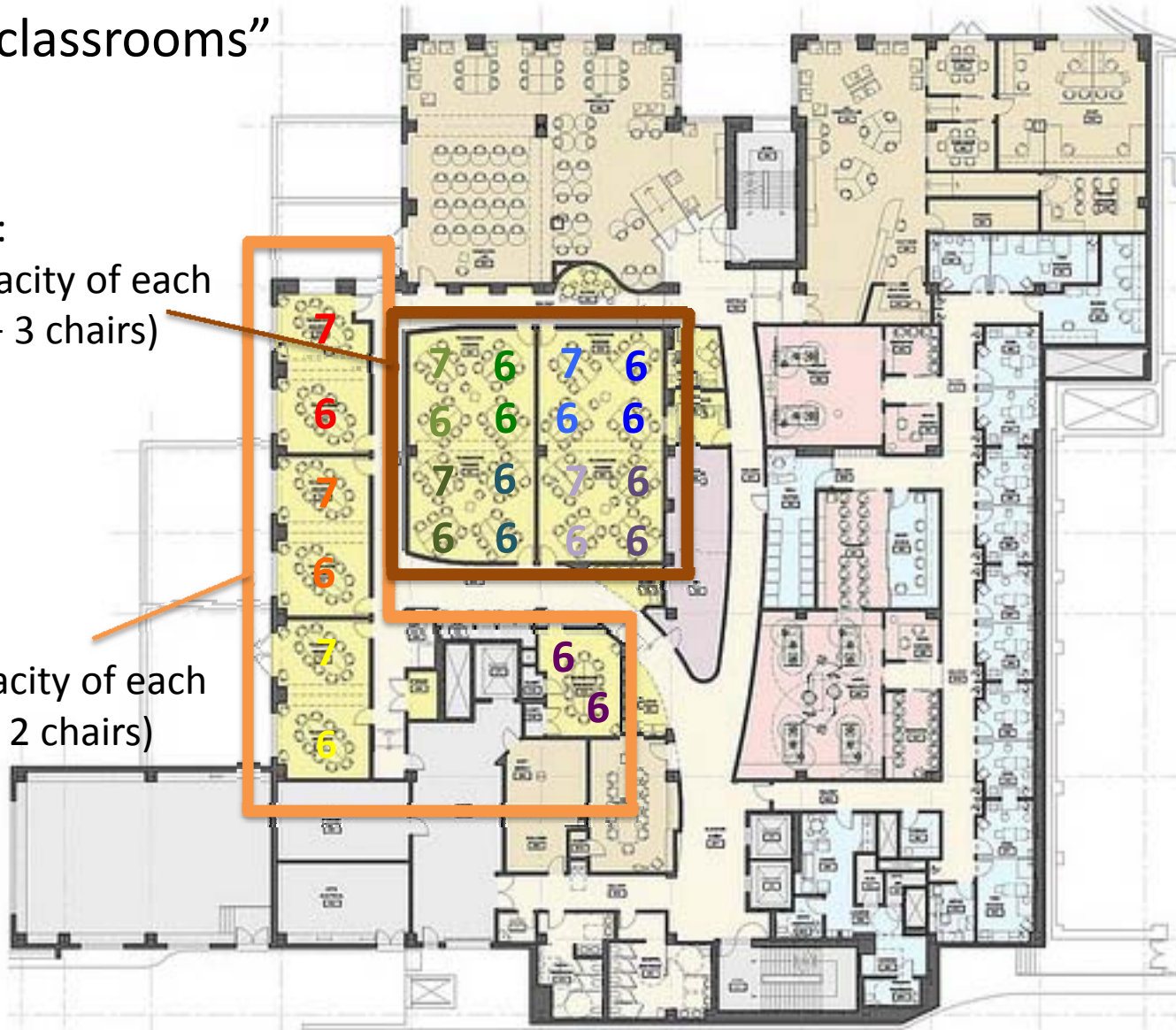
This shows a possibility for assigning teams to rooms using TBL/anatomy groups
(21 teams of 6, 5 teams of 5)

Teaching and Learning Center

Yellow “classrooms”

CL 220-223:
Official capacity of each room: 24 (+ 3 chairs)

CL 210-216:
Official capacity of each room: 10 (+ 2 chairs)



Can officially accommodate:
 $4 \times 24 + 7 \times 10 = 166$

2010-2011 MS2 class size: 151

This shows a possibility for assigning teams to rooms using **EC SGs** (divided in half)
(7 SGs of 13 (divide into 7/6), 5 SGs of 12 (divide into 6/6))